

# THALES



**ALCEA – Accessing, storing,  
registering and transferring data  
from & to an Alcea VM**



# ALCEA – Accessing, storing, registering and transferring data

**Alcea VMs are volatile, therefore data as well. Avoid storing data locally. In any case, make sure to always store/backup your data externally.**

**Several possible means are available to store, retrieve, transfer data from or to your Alcea VM:**

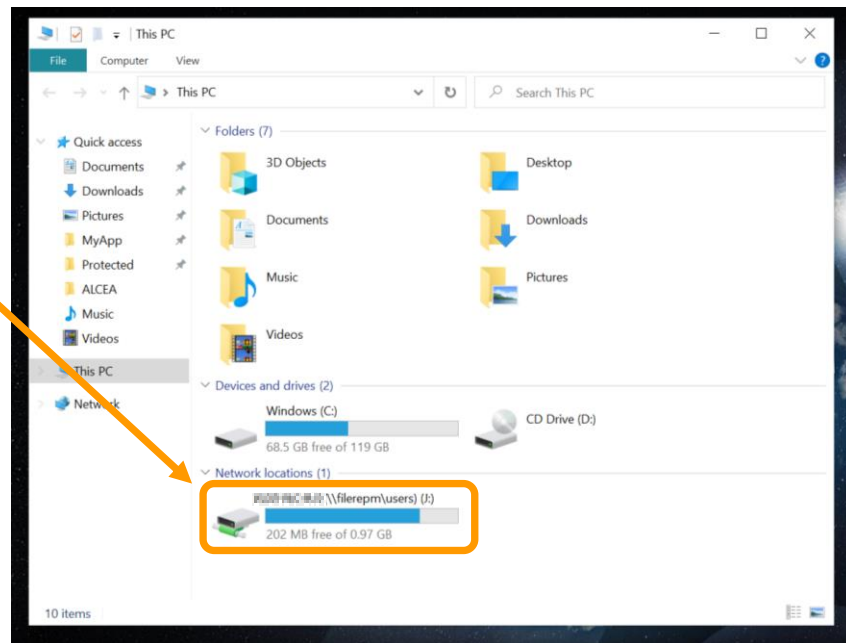
- User's dedicated network drive '`\\<Network_drive>\<your_TGI>`'
- emails (with attachments)
- TOL, accessible from the Intranet
- Data transfer via Exchanger, accessible from the Intranet
- ...

# ALCEA – Users Network drive dedicated folder 1/2

All users are able to store/save/transfer their data from/to their dedicated user's network drive folder, '\\<Network\_drive>\<your\_TGI>' network drive.

Accessible from and within your Alcea VM, by default.

The network drive letter and path depend on your attached VM domain (Operational Assignment).



# ALCEA – Users Network drive dedicated folder 2/2

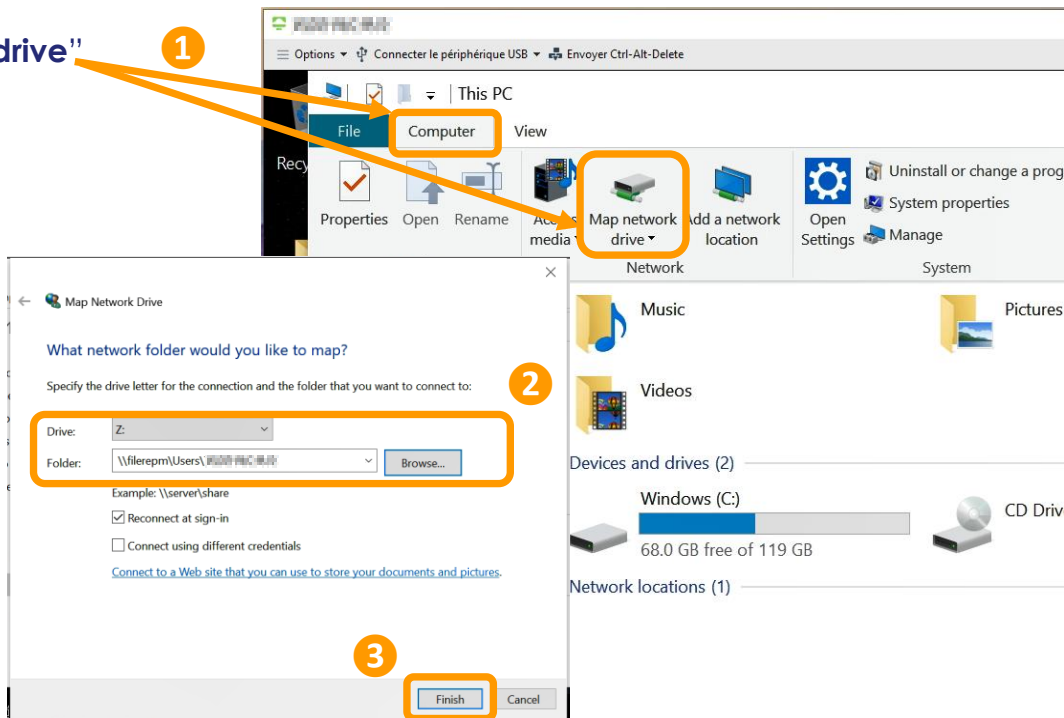
If not set by default, you can map your '\\<Network\_drive>\<your\_TGI>'. Ask your colleagues or contact your IT service to get the path of your network drive.

1 Select “Computer” and “Map network drive”

2 Select the Drive letter and fill in the “Folder” with the '\\<Network\_drive>\<your\_TGI>'

NB: The network drive letter and path depend on VM domain (Operational Assignment).

3 Then “Finish”



<https://alcea.info.thalesgroup.com/en/>



[www.thalesgroup.com](http://www.thalesgroup.com)

THALES GROUP OPEN

